

**FOCUS ON  
SEAFOOD PRODUCTS PROCESSING ADVANCE  
EQUIPMENT AND TOTAL SOLUTIONS**

专注于提供水产加工关键设备及整体解决方案

**EasySplit Shrimp Back Splitting & Peeling Machine**  
**EasySplit型虾开背剥壳机**





# EASYSPLIT SHRIMP BACK SPLITTING AND PEELING MACHINE

## EasySplit型虾开背剥壳机

EasySplit型虾开背剥壳机

Powertech根据市场需求，开发推出了EasySplit型虾开背剥壳机，用于去头虾的开背、去肠线和剥壳的全自动加工。

EasySplit Shrimp Back Splitting & Peeling Machine

Powertech has developed and launched EasySplit Shrimp Back Splitting & Peeling Machine for automatic processing of back-splitting, deveining and peeling of head-off shrimps.



## FEATURES 特点

★更快	平均速度是手工的6~10倍，剥壳效率高；
★更好	加工效果更一致，避免了人工加工效果的因人而异；
★更低	替代了大量工人，减少了人力成本；占用加工车间面积更小，使建设厂房和运营成本更低；
★更安全	减少了人与食品的接触次数，也缩短了加工时间，更有利于虾的保鲜和食品安全；
★更灵活	可根据产量需要开启不同台数的剥壳机，不再因旺季招工不足，而淡季开工不足而烦恼，使生产计划安排更加灵活。

Compared with hand peeling, having following advantages:

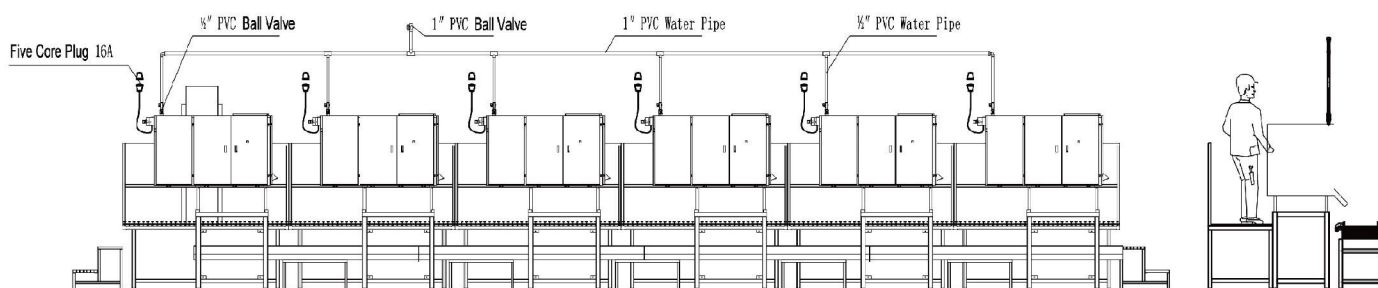
**Faster:** It's 6 to 10 times faster than hand peeling, ensuring high efficiency.

**Better:** Better consistency of end products and reduces human error.

**Lower:** Less labor and Cheaper cost. Smaller footprint for shrimp peeler, which reduces workshop construction budget and running cost.

**Safer:** Less contact between operator and products, shorten processing time while ensuring freshness and food safety.

**Smarter:** Smart production plan. Start suitable quantities of peelers according to productivity requirement. Less problems with labor source during season and off-season.





## APPLICATION RANGE

应用范围

EasySplit型虾开背剥壳机不仅在虾类加工厂被广泛使用，也可用于需要对原料虾进行加工的餐馆、酒楼、食堂等地方。该机器可以将去头的养殖虾如南美白对虾，文莱蓝虾等，去头的海捕虾如阿根廷红虾，黑虎虾（草虾）等加工成七种不同款式。

EasySplit Shrimp Back Splitting & Peeling Machine can be used widely not only in shrimp processing factories, but also for restaurants, seafood markets, commissaries where raw shrimps need be processed while space is limited. This machine can process headless both farm-raised shrimps, such as Vannamei, Brunei Blue Shrimp, etc and wild-caught shrimps, such as Argentina Red Shrimp, Black Tiger into seven styles.





## SPECIFICATION

### 技术参数

#### 供水 Water

水量: 130至150升/小时 Water Volume: 130-150 L/hr  
 水压:  $\geq 4$ 公斤 Water Pressure:  $\geq 4$ kg

#### 供电 Electricity

电压: 380伏 Voltage: 380 volt  
 功率: 0.55kw Power: 0.55kw

#### 体积 Dimension

1275\*735\*900毫米 1275\*735\*900mm

#### 重量 Weight

净重: 192公斤 Net Weight: 192kg

## INPUT OF RAW HEADLESS SHRIMP IN POUNDS PER HOUR

### 各规格去头原料虾每小时的产能 (磅)

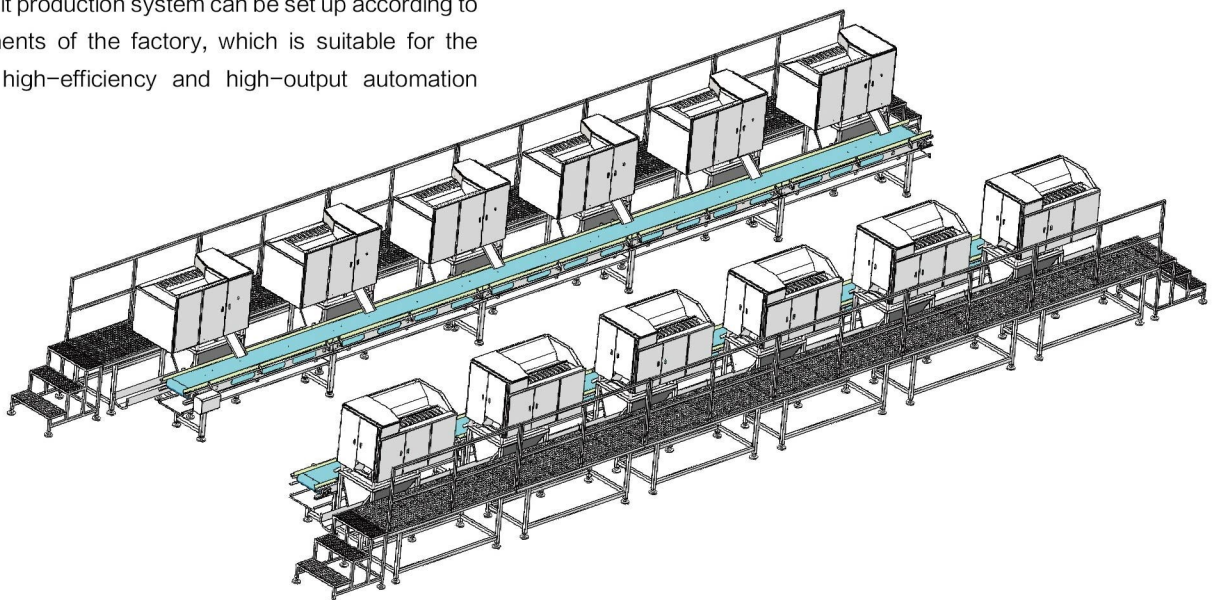
Input of raw headless shrimp in pounds per hour		
Shrimp size: pcs/lb	Peeling Speed	
	5000 pcs/hr	4500 pcs/hr
10/15 pcs/lb	440 lbs	396 lbs
16/20	275	248
21/25	220	198
26/30	176	158
31/35	154	139
36/40	132	119
41/50	110	99
51/60	88	79
61/70	77	69
71/90	66	59

## MULTIPLE UNIT STATION

### 多联机组工作站

EasySplit型虾开背剥壳机可以根据工厂需求多台组建多联机组生产系统, 适用于大规模的高效、高产的自动化工厂。

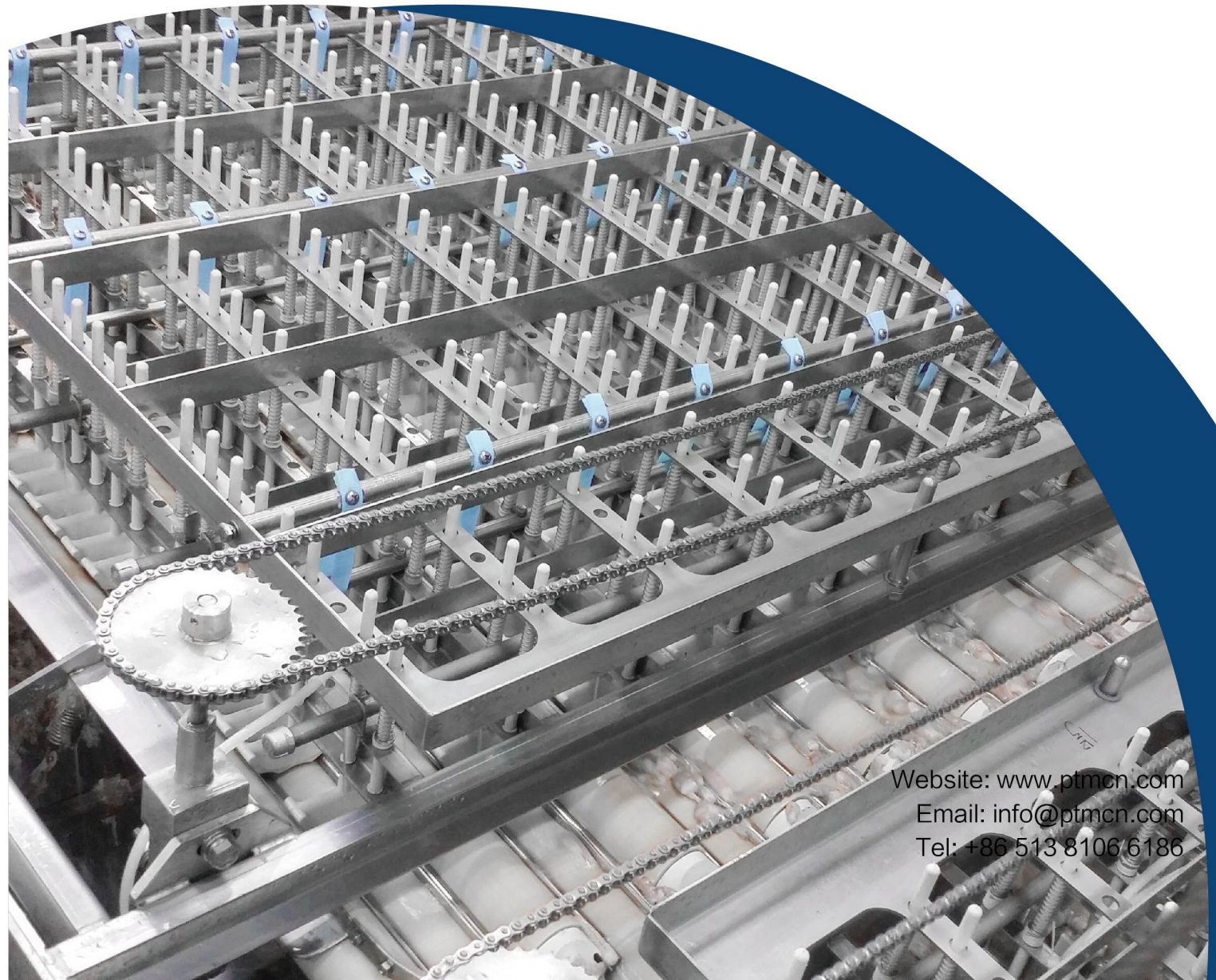
The multi-unit production system can be set up according to the requirements of the factory, which is suitable for the large-scale high-efficiency and high-output automation plant.



**FOCUS ON  
SEAFOOD PRODUCTS PROCESSING ADVANCE  
EQUIPMENT AND TOTAL SOLUTIONS**

专注于提供水产加工关键设备及整体解决方案

**AutoPeel Automatic Shrimp Peeling System**  
**AutoPeel型全自动虾剥壳生产线**



Website: [www.ptmcn.com](http://www.ptmcn.com)  
Email: [info@ptmcn.com](mailto:info@ptmcn.com)  
Tel: +86 513 8106 6186

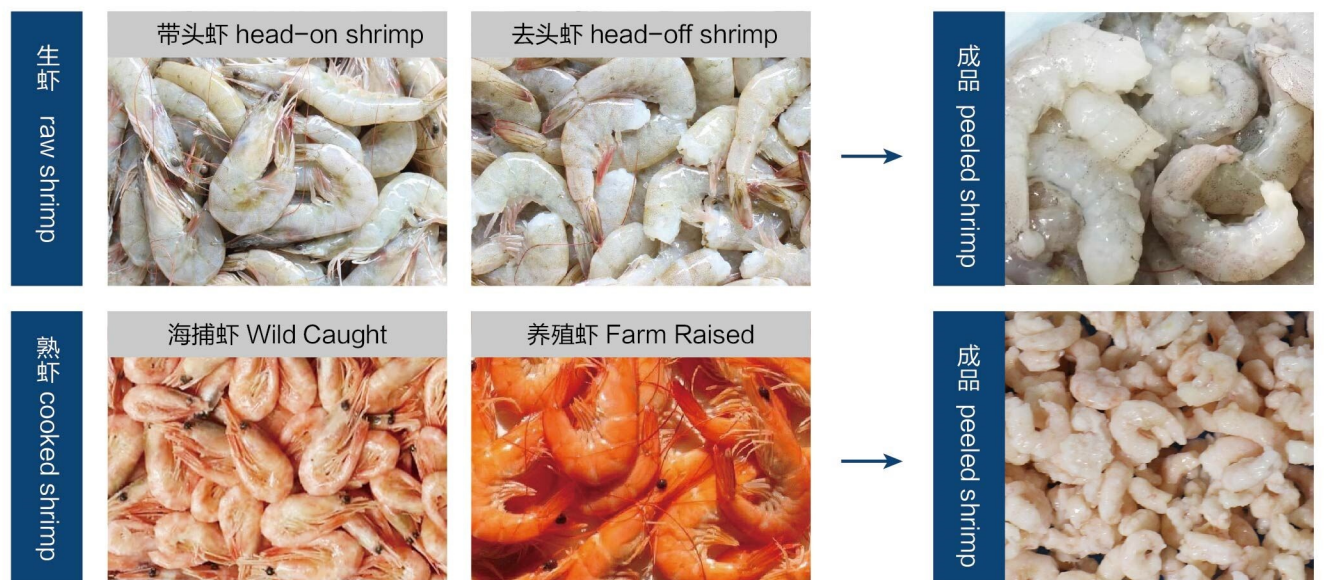


# AUTOPEEL AUTOMATIC SHRIMP PEELING SYSTEM

## AutoPeel型全自动虾剥壳生产线

该加工系统由多台具有独特功能的单机组成，主要用于对原料带(去)头虾、海捕或养殖虾、熟虾或生虾、进行大批量剥壳加工，经过清洗、分离、去杂、开背、去肠、检验等工艺流程，加工后的最终产品为虾仁。

The system is composed of a series of machines with unique functions, used for batch processing of head-on or head-off shrimp, wild caught or farm raised shrimp, cooked or raw shrimp. The end product is peeled shrimp, after the complete process of pre-cleaning, head-removal, peeling, separating, fine-cleaning, back-splitting, deveining, final inspection and etc.



# AUTOPEEL AUTOMATIC SHRIMP PEELING SYSTEM DIAGRAM

## AutoPeel型全自动虾剥壳生产线设备组合示意图

### 单台技术参数

TECHNICAL PARAMETERS FOR 1 SET

主电机功率：3千瓦

Main Motor Power: 3kw

自动喂料系统输送电机功率：0.75千瓦

Auto-feeding System Power: 0.75kw

用水量：110公斤/分钟

Water Consumption: 110kg/min

工作水压：≥4公斤

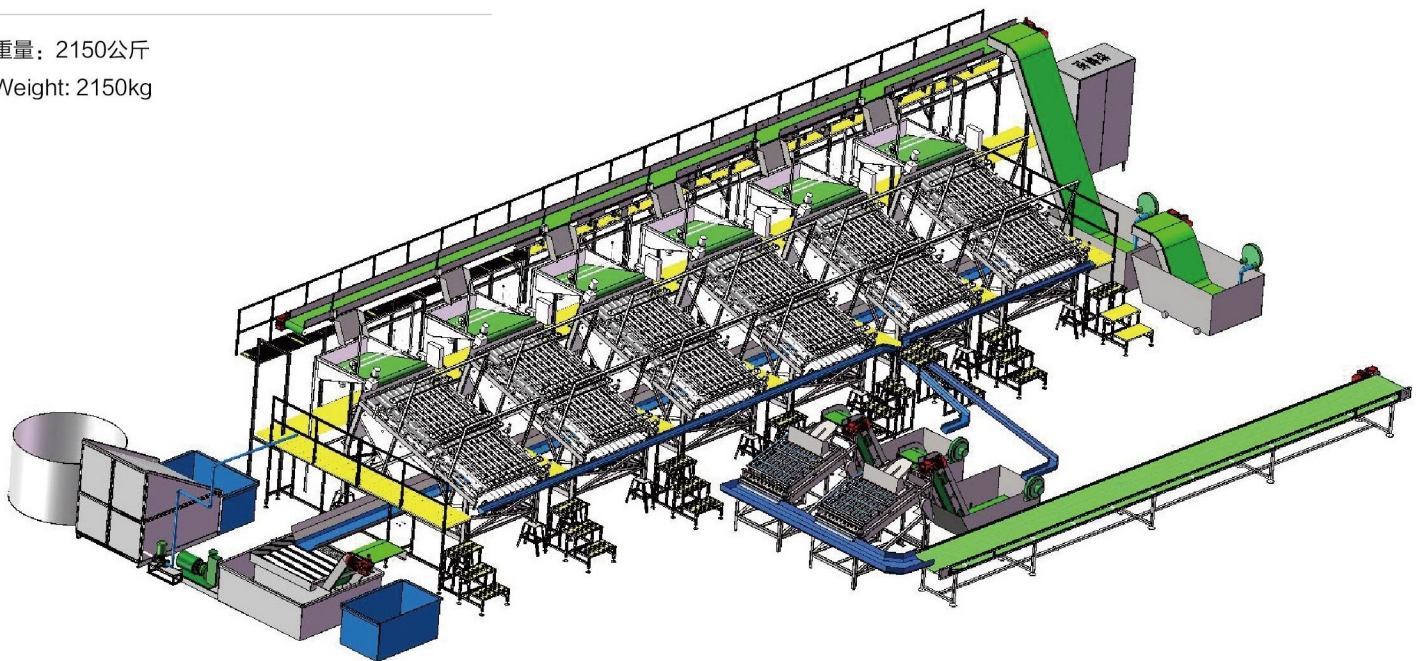
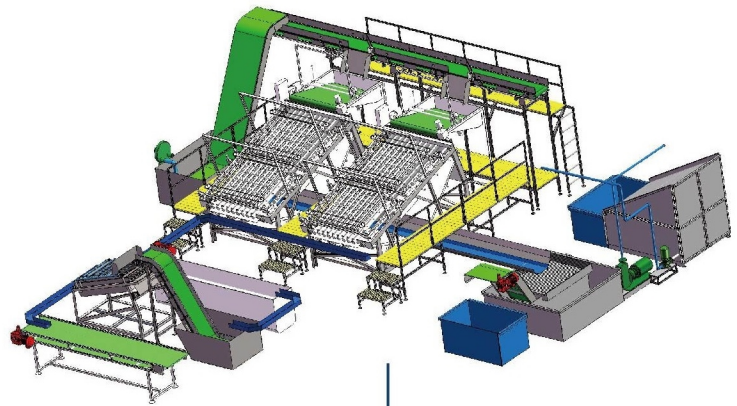
Water Pressure: ≥4kg

体积：3475x1860x2160毫米

Dimension: 3475x1860x2160mm

重量：2150公斤

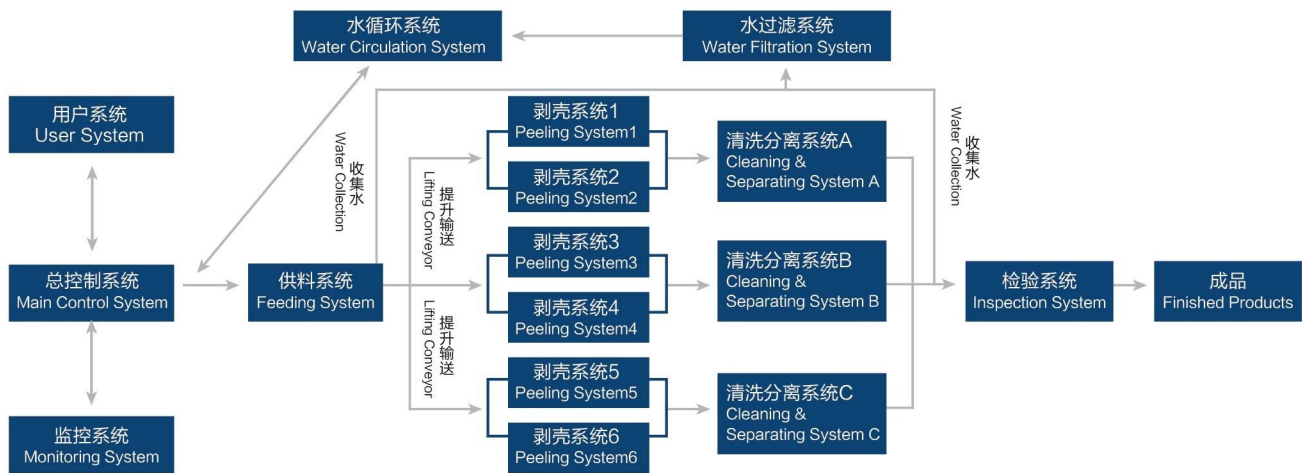
Weight: 2150kg





# AUTOPEEL AUTOMATIC SHRIMP PEELING SYSTEM FLOW DIAGRAM

## AutoPeel型全自动虾剥壳生产线流程图



## FEATURES 特点

★更快	机器剥壳的速度是人工的约30倍，剥壳效率高。
★更低	减少了人力成本，机器剥壳占用加工车间面积更小，使建设厂房和运营成本更低。
★更安全	机器加工减少了人与食品的接触次数，也缩短了虾的加工时间，更有利于虾的保鲜和食品安全。
★更灵活	可根据产量需要开启不同台数的剥壳机，不再因旺季招工不足，而淡季开工不足而烦恼，使生产计划安排更加灵活。

**Faster:** Peeling speed is about 30 times faster than manual peeling, ensuring high efficiency.

**Cheaper:** Reduce labor cost, smaller footprint for shrimp peeler, which reduces factory construction budget and operating cost.

**Safer:** Less contact between operators and products, short processing time to ensure freshness and food safety.

**Smarter:** Smart production plan. System can be expanded at any time as production increases by adding additional machines. Reduced labor fluctuations to meet peak season demands.



**FOCUS ON  
SEAFOOD PRODUCTS PROCESSING ADVANCE  
EQUIPMENT AND TOTAL SOLUTIONS**

专注于提供水产加工关键设备及整体解决方案

**EasyFillet Fish Filleting Machine**  
**EasyFillet型鱼开片机**



Website: [www.ptmcn.com](http://www.ptmcn.com)  
Email: [info@ptmcn.com](mailto:info@ptmcn.com)  
Tel: +86 513 8106 6186



## FEATURES 特点

- 机械开片的效果一致，避免了人工去骨效果不一致的现象。
- 自动化程度高，技术先进、操作简便，提高生产效率的同时大幅降低生产成本。
- 机器加工减少了人与鱼的接触次数，缩短了加工时间，减少细菌滋生，品质有保障。
- 配套设备配置合理、紧凑、占地少，节约大量厂房。
- 可根据产量需求开启不同台数机器，便于灵活安排生产计划。

Better consistency of end products and reduces human error.

High automation degree, advanced technology with easy operation, greatly improves productivity and reduces production cost.

Less contact between operator and products, shortens processing time, reduces bacterial breeding and guarantees quality.

Compact and reasonable structure allows less occupied area in workshop, saves factory construction.

Start suitable quantities of filleting machines flexibly according to production plan.

## SPECIFICATION

### 技术参数

额定功率：2.2千瓦  
额定电压：380伏/440伏

Power Rating: 2.2kw  
Voltage: 380V/440V

加工能力：24-36条/分钟  
原料规格：20-40厘米

Capacity: 24-36 pieces/min  
Material Size: 20-40cm

耗水量：20-25升/分钟  
设备尺寸：3890 × 1150 × 1550毫米

Water Consumption: 20-25L/min  
Dimension: 3890\*1150\*1550mm

重量：1035公斤

Weight: 1035kg



机器：24-36条/分钟  
Machine: 24-36条/min



人工：6条/分钟  
Manual: 6条/min



## FISH FILLET PRODUCTION LINE 鱼片生产线

我们提供量身定制---水产加工生产线整体解决方案!

We provide customized --- seafood products processing production line total solutions!

## TECHNICAL PROCESS 工艺流程

原料 → 储料池 → 提升输送机 → 缓冲槽 → 输送机 → 称重机 → 分料输送机 → 滑槽 → 开片机 → 鱼骨输送机 → 去皮机 → 鱼皮输送机 → 输送机 → 修整线 → 下脚料输送机 → 抽检台 → 灯检线 → 摆模线 → 速冻冷库

Raw Fish → Reservoir → Lifting Conveyor → Buffer Groove → Horizontal Conveyor → Weighing Machine → Feeding → Chute → Filleting Machine → Fish Bone Conveyor → Skinning Machine → Skin Conveyor → Fillet Conveyor → After Treatment Line → Scarps Conveyor → Sample Inspection Platform → Light Inspection Line → Arrangement and Fitting Line → Deep Freezer

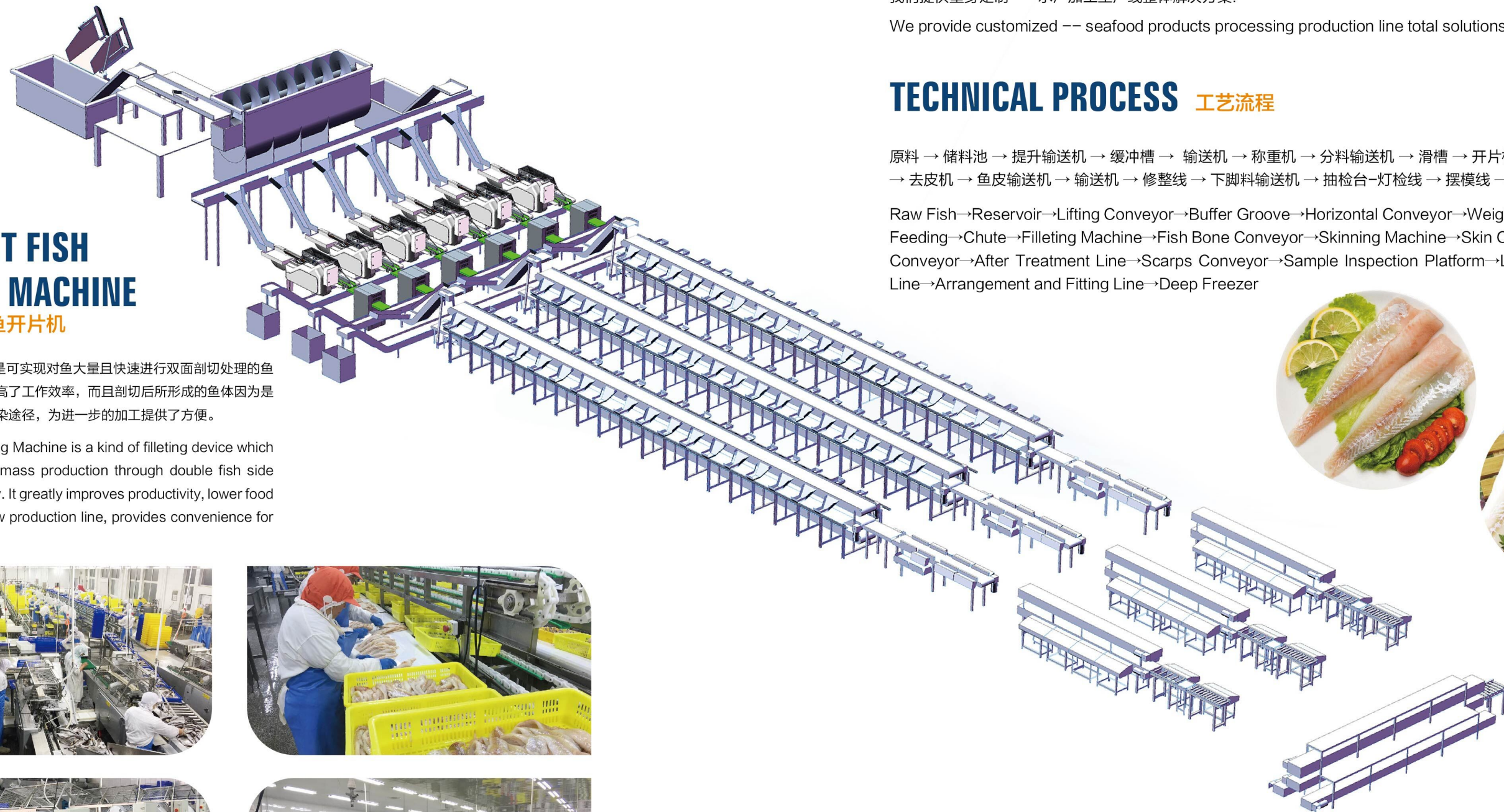


## EASYFILLET FISH FILLETING MACHINE

### EasyFillet型鱼开片机

EasyFillet型鱼开片机是实现对鱼大量且快速进行双面剖切处理的鱼开片剖切装置。不仅提高了工作效率，而且剖切后所形成的鱼体因为是流水生产线，减少了污染途径，为进一步的加工提供了方便。

EasyFillet Fish Filleting Machine is a kind of filleting device which can realize fast and mass production through double fish side cutting synchronously. It greatly improves productivity, lower food contamination via flow production line, provides convenience for further processing.





## EASYSKINNER A FISH SKINNING MACHINE

### EasySkinner A型鱼去皮机

EasySkinner A型鱼去皮机采用了机械传递、滚压、开剥等一系列工序，从而达到了自动去皮功能，适用于多种鱼类的自动去皮加工，皮、肉剥离效果最佳。

EasySkinner A Fish Skinning Machine adopts a series of processes such as mechanical transferring, rolling and peeling to achieve skinning automatically. It is suitable for skinning various kinds of fish automatically with the best skinning effect.

## FEATURES 特点

- 更快:** 工作效率是手工操作的数倍,节约了大量人力;
- 更好:** 有效地降低了人与食品接触的频次,食品更为安全、清洁;
- 更方便:** 刀架可根据鱼皮厚度作相应调整,操作方便;
- 更安全:** 电气和机械互锁的机、电一体化结构,确保了调试和日常维护保养的安全。

Compared with hand skinning having following advantages:  
**Faster:** It's several times faster than hand peeling, saves lots of manpower;  
**Better:** Less contact between operator and products, ensured safety and clean.  
**Easier:** The knife rest can be adjusted according to the thickness of fish skin with easy operation.  
**Safer:** The mechanical-electrical integration structure with electrical and mechanical interlock, ensures safe commission and daily maintenance.



## SPECIFICATION 技术参数

截面宽度: 430毫米	Section Breadth: 430mm
最大出入口高度: 70毫米	Max. Height of Exit & Inlet: 70mm
产能: 300-600公斤/小时	Capacity: 300-600 kg/hr
额定功率: 1.1千瓦	Power: 1.1kw
耗水量: 200-250升/小时	Water Consumption: 200-250 L/hr
水压: 大于0.1MPa、 小于0.5MPa	Water Pressure: 0.1-0.5MPa
体积: 2100 × 800 × 1200毫米	Dimension: 2100 × 800 × 1200mm
重量: 230公斤	Weight: 230kg

## APPLICATION RANGE 应用范围



EasySkinner A型鱼去皮机适用于对狭鳕、蓝鳕、罗非鱼、叉尾鲷鱼、鱿鱼、红鱼等鱼类的去皮加工。

EasySkinner A Fishing Skinning Machine is suitable for skinning processing of Alaska Pollock, Blue Cod, Tilapia, Forktail Fish, Squid, Red Fish, and etc.



# EASYSKINNER B FISH SKINNING MACHINE

## EasySkinner B型鱼去皮机

EasySkinner B型鱼去皮机是继EasySkinner A型鱼去皮机之后研发推出的，可将更大尺寸鱼片进行去皮，去皮的厚度更厚并能去除皮下脂肪。

EasySkinner B Fish Skinning Machine is designed and launched out after EasySkinner A Fish Skinning Machine, which can peel bigger fillet with thicker skin and remove the fat under the skin.



## FEATURES 特点

- 适用于更大尺寸鱼片去皮。
- 去皮的厚度可以调节，薄皮和厚皮均可去除，脂肪也可去除。
- 独立的弹簧悬挂式的压力辊可进行双道喂料。
- 带有水清洁装置保证了稳定地持续运转。
- 使用的是食品级优质不锈钢材质，结构紧凑易于清洗和日常维护保养。

Suitable for skinning bigger size fillet.  
 Special application for fish both with thick skin and thin skin, and removing fat.  
 Divided pressure roller (spring suspended) for double lane feeding.  
 Water cleaning unit for steady continuous operation.  
 Made of food grade high quality stainless steel, with compact structure which is easy to clean and daily maintenance.

## SPECIFICATION 技术参数

截面宽度: 430毫米	Cutting Width: 430mm
最大出入口高度: 70毫米	Max. Throughput Height: 70mm
产能: 300-600公斤/小时	Capacity: 300-600 kg/hr
额定功率: 1.1千瓦	Power: 1.1kw
耗水量: 200-250升/小时	Water Consumption: 200-250 L/hr
水压: 大于0.1MPa、 小于0.5MPa	Water Pressure: 0.1-0.5MPa
体积: 1850 × 800 × 1200毫米	Dimension: 1850 × 800 × 1200mm
重量: 230公斤	Weight: 230kg

## APPLICATION RANGE 应用范围



EasySkinner B型鱼去皮机适用于对真鳕、黑线鳕、鲈鱼、比目鱼、三文鱼等鱼类的去皮加工。

EasySkinner B Fishing Skinning Machine is suitable for skinning processing of Pacific Cod, Salmon, Haddock, Flatfish, Flounder and etc.

Website: [www.ptmcn.com](http://www.ptmcn.com)  
Email: [info@ptmcn.com](mailto:info@ptmcn.com)  
Tel: +86 513 8106 6186



**FOCUS ON SEAFOOD PRODUCTS PROCESSING  
ADVANCE EQUIPMENT AND TOTAL SOLUTIONS**

**专注于提供水产加工关键设备及整体解决方案**

**Deepskinner Deep Skinning Machine**  
**DeepSkinner型深去皮机**



## DEEPSKINNER DEEP SKINNING MACHINE

### DeepSkinner型深去皮机

DeepSkinner型深去皮机是将鱼体的表面通过冻结固定在带制冷装置的转鼓上进行去皮，不会对鱼皮或者鱼肉造成任何损伤，适用范围更广，且产能高。

DeepSkinner Deep Skinning Machine is to freeze the fish surface and make it fixed on a rotating drum with refrigerating device and then peel, doesn't cause any strain onto the fish skin or meat. It's suitable for more kinds of fish with high capacity.

## SPECIFICATION 技术参数

产能：50-200片/分钟	Capacity: 50-200 fillets/min
输送带速度：24米/分钟	Belt Speed: 24 m/min
耗水量：2-25升/分钟	Water Consumption: 2-25 L/min
功率：8千瓦	Power: 8kw
制冷剂：R-404a	Refrigerant: R-404a
重量：约600公斤	Weight: Approx. 600kg
尺寸：2400x1225x1500毫米	Dimension: 2400x1225x1500mm

## FEATURES 特点

**高产能：**因鱼片的表面被冷冻固定，去皮时很稳定不会移位，每分钟大约200片。

**适用范围更广：**适用于更多种类的鱼去皮，如明太鱼，三文鱼，海鳟鱼，鲱鱼，马鲛鱼，沙丁鱼，鲶鱼，海鲤鱼，海鲈鱼，比目鱼等。

**深度可调节：**已对刀的角度和支撑进行了改进，去皮的深度可在0-12毫米之间无限调节。输送带的长度和样式可以按照客户的要求定制。

**维护更方便：**采用开放式设计，刀位调节简便，且机器自带磨刀装置，大大降低了停机次数。

**更卫生：**采用的优质食品级不锈钢材质，独立的加工区域、独特的制冷区域外壳设计，日常清洗非常简便。

**High Capacity:** Because the surface of fillets are frozen and firmly positioned, very stable without shift during skinning, about 200 fillets/min.

**More Flexible on Fish Species:** It's suitable for skinning more kinds of fish, such as: Alaska Pollock, Salmon, Sea Trout, Herring, Mackerel, Sardine, Catfish, Sea bream, Sea bass, Flatfish and etc.

**Adjustable Cutting Depth:** With improved knife angle and knife support, the skinning depth is infinitely adjustable between 0-12 mm. And the conveyor length and design can be customized.

**Easier Maintenance:** It adopts open design, easier adjustment of knife, and built-in sharpening device, reduces stops a lot.

**Better Hygiene:** It's made of premium food grade stainless steel, with separated processing area, and special enclosure of refrigeration area, makes daily cleaning easier.



# FASTGRADER A SHRIMP GRADING MACHINE

## FastGrader A型虾分级机

FastGrader A型虾分级机是用来对不同规格的虾进行分级，适用于冷水虾和温水虾温和而精确的分级。在给料系统释放和定向原料虾后，原料虾落入辊子之间的空隙即分级通道并继续向下滑落，伴随着辊子的旋转就产生了分级。原料虾被按照规格进行分级，以最小规格的虾开始，最大规格的虾结束。

FastGrader A Shrimp Grading Machine is designed for grading shrimps of different sizes. The grader offers a gentle and accurate grading for both cold water shrimp and warm water shrimp. After the feed system releases and orients raw shrimps, grading (sorting) occurs as raw shrimps fall into grading lanes that is the gap between rollers and move down diverging, continuously rotating rollers. Raw shrimps are sorted by size, starting with the smallest size and ending with the largest size.

## FEATURES 特点

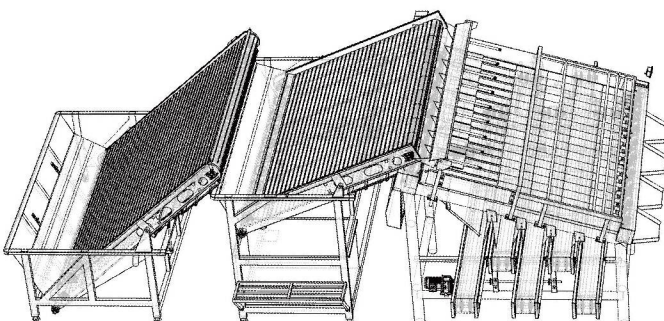
- 可对带头虾、去头虾和虾仁进行分级。
- 可满足客户的要求进行统一规格的分级，体现每只虾的最大价值。
- 提高了分级的一致性，简便了分级的流程，调节方便，设计卫生。最低限度了日常维护要求，实现了最佳的分级效果。
- 独特的喂料系统，加上精准的控制，达到产品高度统一实现高质量包装。

Grades different styles of shrimps, such as HOSO, HLSO and PUD shrimps.

Meets the uniformity specifications of customer's requirements and maximizes the value of each shrimps.

Improves uniformity and simplifies grading process, easy to adjust, minimal maintenance required and hygienic design, achieves the best grading effect.

Unique feed system, along with precise controls, offers a great opportunity to pack high-quality and uniform shrimps.



## SPECIFICATION 技术参数

产能：12辊1.5吨/小时，18辊2吨/小时；产能也可根据客户要求定制

Capacity: 12 rollers 1500kg/hr, 18 rollers 2000kg/hr, and can be customized.

主电机功率：1.5千瓦

Main Motor Power: 1.5kw

上下辊子调节电机功率：0.37千瓦x2

Upper and Lower Rollers Adjust Motor Power: 0.37kw x 2

分级和收集输送电机功率：0.4千瓦x2

Grading and Collection Convey Motor Power: 0.4kw x 2

原料输送电机功率：0.75千瓦x2

Raw Material Convey Motor Power: 0.75kw x 2

水泵电机功率：1.1千瓦

Water Pump Motor Power: 1.1kw

水压：≥4公斤

Water Pressure: ≥4kg

尺寸：12辊 3905 × 6903 × 2333毫米, 18辊 4796 × 6903 × 2333毫米

Dimension: 12 rollers 3905 × 6903 × 2333mm

18 rollers 4796 × 6903 × 2333mm

重量：12辊2365公斤，18辊2670公斤

Weight: 12 rollers 2365kg, 18 rollers 2670kg





# FASTGRADER B FISH GRADING MACHINE

## FastGrader B型鱼分级机

FastGrader B型鱼分级机通过旋转的辊子和水淋的方式，使原料鱼以一定的角度向下滑落，掉落到辊子之间的间隙里后达到分级的目的。可以按照客户的分级要求，通过机器一侧的手轮来调节辊子之间的间隙，最多可分级五个规格。适用于各种体型较圆的鱼，如明太鱼、鲱鱼、马鲛鱼、竹荚鱼、西鲱鱼、沙丁鱼、无须鳕等的分级。

FastGrader B Fish Grading Machine makes the raw fish slide down at a certain angle by means of rotating rollers and water spray, then fall into the gaps between rollers to achieve grading (sorting). The gaps between rollers can be adjusted according to the grading specifications requirement of the customer by adjusting the wheels on the side of the machine, which can grade 5 specifications. It is suitable for grading all kind of round fish like pollock, herring, mackerel, horse mackerel, sprat, sardine, blue wittling and etc.



## TYPES AVAILABLE

### 可供选择的型号

6辊式：产能约11吨/小时	6 rollers: ~11 tons/hr
8辊式：产能约15吨/小时	8 rollers: ~15 tons/hr
10辊式：产能约18吨/小时	10 rollers: ~18 tons/hr
14辊式：产能约30吨/小时	14 rollers: ~30 tons/hr

## APPLICATION RANGE

### 应用范围



## SPECIFICATION 技术参数

液压站工作压力：80~100BAR，也可提供电机传动模式。

Hydraulic Station Working Pressure: 80~100BAR, or electrical motor optional.

分级轴转速：60~120/分钟

Roller Rotating Speed: 60~120/min

分级间距：16~66毫米

Gap Between Rollers: 16~66mm

主体及油缸材质：316不锈钢

Frame & Cylinder Material: 316 Stainless Steel

辊子：直径114

Roller:  $\Phi$  114

应用范围：捕鱼船及陆地鱼加工工厂

Application Range: Fishing Trawler & Fish Plant

Website: [www.ptmcn.com](http://www.ptmcn.com)  
Email: [info@ptmcn.com](mailto:info@ptmcn.com)  
Tel: +86 513 8106 6186



**FOCUS ON SEAFOOD PRODUCTS PROCESSING  
ADVANCE EQUIPMENT AND TOTAL SOLUTIONS**

**专注于提供水产加工关键设备及整体解决方案**

**EasyScale Fish Scaling Machine**  
**EasyScale型鱼去鳞机**



# EASYSCALE FISH SCALING MACHINE

## EasyScale型鱼去鳞机

EasyScale型鱼去鳞机采用高压喷头从不同方位不同角度喷出水柱，直接掀起鱼鳞。市面上很多用硬质毛刷或者铁刷来去鱼鳞，会对鱼肉鱼皮造成一定损伤，而用高压水柱的原理去鱼鳞不伤鱼、不伤鱼翅、不伤鱼尾、去鳞干净彻底，360度无死角。

EasyScale Fish Scaling Machine adopts high pressure nozzle which can eject water column from different angles to lift fish scales. On the market, hard brush or iron brush are used for scaling, fish skin and meat were hurt, while the high pressure water column does not hurt fish, fish fin and fish tail, fish scales are removed cleanly and completely, and 360 degree no dead corner.

## FEATURES 特点

- 运用上下两层链网压住鱼运输，采用多组不同角度高压水喷射，从而达到去鳞的目的。
- 自动化程度高，操作简便，节约大量人力，大幅降低生产成本，由劳动密集型转化为高效经济型。
- 水压大小可调节，操作时可调整最佳压力，在鱼鳞去除的条件下又不伤害鱼体，从而保证品质。
- 替代大量人力，从而降低了人员跟产品的直接接触，防止各类细菌的侵触，减少了交叉污染产生，真正做到卫生安全。

Two layers of chain nets are used to control the transportation of fish, multiple groups of high-pressure water jets are used at different angles, so as to achieve scaling.

High degree of automation, easy to operate, save a lot of manpower, reduce production cost greatly, convert from labor intensive into efficient economy.

The water pressure can be adjusted to the most suitable pressure during operation, fish body will not be hurt, ensures quality.

Replaces a large number of manpower, reduces the direct contact between operator and product, prevents the invasion of all kinds of germs, reduces cross-contamination, and truly achieves health and safety.



## SPECIFICATION 技术参数

工作速度：20-30尾鱼/分钟

Capacity: 20-30 pieces/min

额定功率：5.74千瓦

Power Rating: 5.74kw

水消耗：200-250升/小时

Water Consumption: 200-250 L/hr

水压：3MPa

Water Pressure: 3MPa

处理鱼种：红鱼及类似鱼种

Fish Species: Red Fish & Similar Fish

体积：1900mm × 1140mm × 2165毫米

Dimension: 1900mm × 1140mm × 2165mm

重量：750公斤

Weight: 750kg

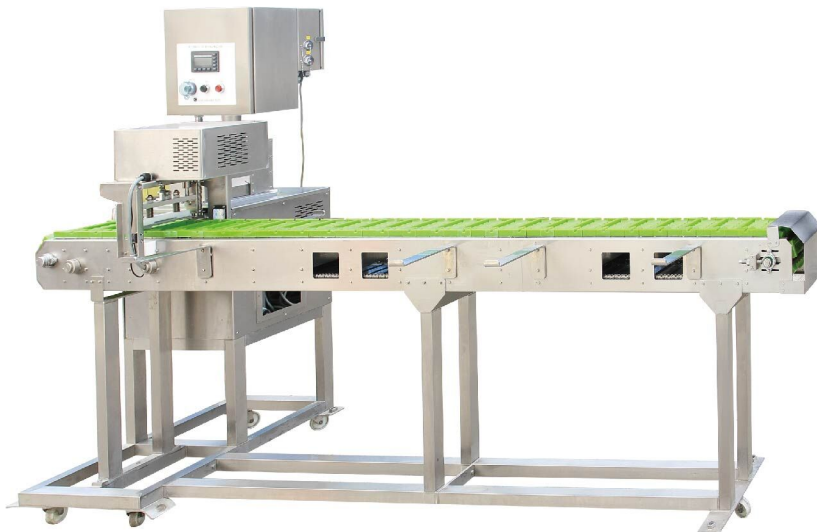
Website: [www.ptmcn.com](http://www.ptmcn.com)  
Email: [info@ptmcn.com](mailto:info@ptmcn.com)  
Tel: +86 513 8106 6186



**FOCUS ON SEAFOOD PRODUCTS PROCESSING  
ADVANCE EQUIPMENT AND TOTAL SOLUTIONS**

**专注于提供水产加工关键设备及整体解决方案**

**Easyskewer Skewer Machine**  
**EasySkewer型穿串机**



# EASYSKEWER SKEWER MACHINE

## EasySkewer型穿串机

EasySkewer型穿串机是一种带有自动穿串装置的设备，只需要把食物在模具内摆放好，就可实现自动穿串。采用了先进的数字控制技术，传感器控制，实现了自动上签、自动穿串的全过程。

EasySkewer Skewer Machine is a kind of equipment with automatic skewering device, only need to place the food in the mold well, then can complete automatic skewering. Adopts advanced digital control technology and sensor control, can carry out the whole process of on-boarding and skewering automatically.

## FEATURES 特点

- 根据模具不同，可穿多种食物，一机多用，可满足用户对穿串的各种要求。
- 穿串效果好，速度快，解决了人工穿串的效率低，劳动强度大，雇人难，工资高等问题。
- 替代大量人力，从而降低了人员跟产品的直接接触，防止各类细菌的侵触，减少了交叉污染产生，真正做到卫生安全。
- 主体采用优质食品级不锈钢材料制造，底板采用国际食品级复合PP板，清洁方便。

Different kinds of food can be skewered according to the mold, one machine multi-purpose, can meet user's different requirements.

Good skewering effect, fast speed, solves the problem of manual skewering low capacity, high labor intensity, difficult employment and high salary.

Replaces a large number of manpower, reduces the direct contact between operator and product, prevents the invasion of all kinds of germs, reduces cross-contamination and truly achieves health and safety.

The main body is made of premium food grade stainless steel, and the base plate is made of international food grade PP composite board, easy to clean.



## SPECIFICATION 技术参数

工作速度：最多1500串/小时

额定功率：0.226千瓦

处理物料：虾、肠、面筋、禽肉类等可以穿串的食物

体积：2824 × 836 × 1170毫米

重量：200公斤

Capacity: 1500 pieces/hr at most

Power: 0.226kw

Suitable for: shrimp, sausage, gluten, poultry meat, and etc

Dimension: 2824 × 836 × 1170mm

Weight: 200kg

## APPLICATION RANGE 应用范围



Website: [www.ptmcn.com](http://www.ptmcn.com)  
Email: [info@ptmcn.com](mailto:info@ptmcn.com)  
Tel: +86 513 8106 6186



**FOCUS ON SEAFOOD PRODUCTS PROCESSING  
ADVANCE EQUIPMENT AND TOTAL SOLUTIONS**

**专注于提供水产加工关键设备及整体解决方案**

**Autopack Automatic Vacuumed Packing Machine  
AutoPack型自动真空贴面包装机**



# AUTOPACK AUTOMATIC VACUUMED PACKING MACHINE

## AutoPack型自动真空贴面包装机

AutoPack型自动真空贴面包装机是宝泰科技根据市场需求研发的高性价比、全自动化的新型包装机，只需按一下启动开关，接着预热-封口-贴体-切膜-送膜与收膜-成品出来，一次自动完成。

AutoPack Automatic Vacuumed Veneered Packing Machine is a cost-effective and completely automatic new packing machine developed by Powertech according to the market demand, only need to press the start switch, then preheating-sealing-veneering-film cutting-film delivery & receiving-finished products, will be completed automatically.

## FEATURES 特点

- 可更换式模具，可根据需要更换所使用托盘的形状和规格。
- 智能控制系统，运行稳定可靠，操作简洁方便，更具人性化。
- 干湿两用，适用范围广，适用材质坚硬或软的各种水产品、禽肉类食品、肉酱等食品。
- 自动收送膜系统，节省包装材料，减少劳动力，更方便效率更高。
- 紧急停止开关，在遇到异常情况时按下可终止所有正在进行的工作，保障人身安全。
- MC负压数显控制表，可对真空值进行精确调节达到所需要求。

Replaceable mold, can replace the shape and specification of the tray according to requirements.  
 Intelligent control system, stable and reliable performance, simple and convenient operation, more user-friendly.  
 Dual use of dry and wet, applicable to a wide range, for hard or soft food, such as aquatic products, poultry food, meat paste and etc.  
 The automatic film receiving system saves packaging materials, reduces labor force, more convenient for application and higher efficiency.  
 Emergency stop switch, press it to terminate all ongoing work in case of abnormal situation, to protect personal safety.  
 SMC negative pressure digital display control table, users can accurately adjust the vacuum value to meet the requirements.



## SPECIFICATION 技术参数

托盘尺寸: 248 × 168 × 20毫米	Tray Size: 248 × 168 × 20mm
工作效率: 4只/次, 8只/分钟	Capacity: 4 pieces/time, 8 pieces/min
盖膜宽度: 422毫米	Film Width: 422mm
真空泵功率: 2.2千瓦	Vacuumed Pump Power: 2.2kw
电源形式: AC380 50Hz	Power Form: AC380 50Hz
整机功率: 约6.5千瓦	Main Power: ~6.5kw
整机重量: 约250公斤	Weight: ~250kg
外形尺寸: 1060 × 1100 × 1400毫米	Dimension: 1060 × 1100 × 1400mm

## APPLICATION RANGE 应用范围

